



Network Cable Copper

LinkIT Patch U/UTP Cat6a White 0.5m

LSZH AWG 24 Snagless

Product number: LI-CAT6AUUTP-005WH

Product Description

Cat.6a cables are used for all installations where one needs robust infrastructure that can handle high loads and is designed for the future. Complies with Cat.6a, manages 10Gbps speed and 500MHz bandwidth. Suitable for use in data center. PoE and PoE + are supported for cable bundles up to 100 cables, PoE ++ Type3 and 4 are supported for cable bundles up to 72 cables.

Main Specifications

Brand	LinkIT
Color	White
Length (m)	0,5
Category	Cat.6a
Connector type 1	RJ-45 male (8P8C)
Connector type 2	RJ-45 male (8P8C)
Conductor material	Copper
Cable shielding	U/UTP - unshielded/unshielded twisted pairs
Cable type	U/UTP

Extended Specifications

AWG wire size	24
Transmission speed	10Gbps
Frequency (Mhz)	500
Cable structure	4 x 2 AWG 24/7 Twisted pair
Locking type	Snagless
NVP value	76%

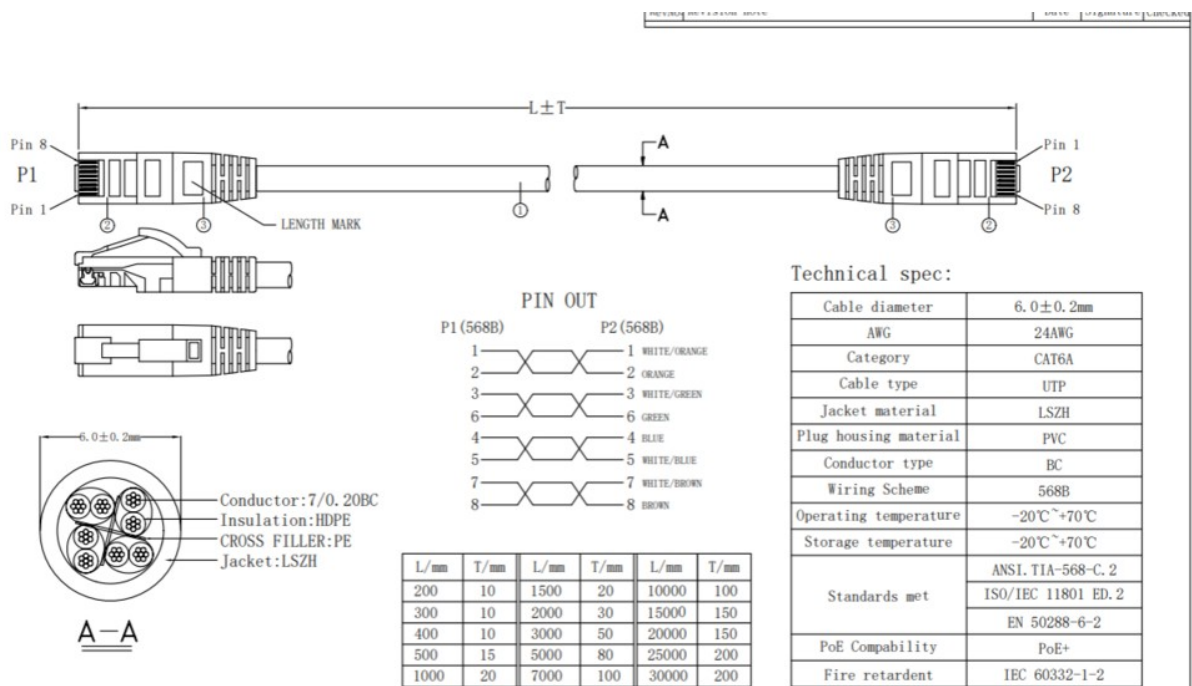


Jacket material	LSZH
Anti-kink sleeve	Moulded PVC
Pin Assignment	568B-568B
Halogenfree	✓
Connector contact plating	50µin gullbelagt
Certifications	CE, REACH, RoHS

Single packaging

Unit	PCE
Height (cm)	12
Width (cm)	12
Length(cm)	3

Dimensional Sketches



- NOTES:**
- 100% Conduction, Short Circuit And Misalignment Test
 - RoHS & REACH Compliant
 - Printing: CAT6A UTP LSZH 24AWG × 4P PATCH VERIFIED TO ANSI.TIA-568-C.2 & ISO/IEC 11801 ED.2 & EN 50288-6-2 & IEC 60332-1-2

③ MOLDED	PVC		G
② CONNECTOR	RJ45 8P8C, Pin Gold-Plated 50µ"	2	PCS
① CABLE	UTP CAT6A 24#(7/0.20BC)+CROSS FILLER LSZH/JACKET, OD:6.0±0.2MM	L	MM
NO. MATERIAL	DESCRIPTION	QTY.	UNIT

Litemref	Quantity	Title/Name, designation, material, dimension etc	Article NO./Reference
Designed by	Checkde by	Approved by - date	File name
HELEN	HELEN	2025.05.06	2025.05.06
SCALE	SCALE	SCALE	SCALE
ANGLE:	UTP CAT6A 24AWG BC LSZH JACKET		Edition
UNIT: MM	LinkIT		1/1

