



## Network Cable Copper

### LinkIT Patch U/UTP Cat6a White 1.5m

AWG 24/7 | LSZH | Snagless

Product number: LI-CAT6AUUTP-015WH

## Product Description

Cat.6a cables are used for all installations where one needs robust infrastructure that can handle high loads and is designed for the future. Complies with Cat.6a, manages 10Gbps speed and 500MHz bandwidth. Suitable for use in data center. PoE and PoE + are supported for cable bundles up to 100 cables, PoE ++ Type3 and 4 are supported for cable bundles up to 72 cables.

## Main Specifications

<b>Brand</b>	LinkIT
<b>Color</b>	White
<b>Length (m)</b>	1,5
<b>Category</b>	Cat.6a
<b>Connector type 1</b>	RJ-45 male (8P8C)
<b>Connector type 2</b>	RJ-45 male (8P8C)
<b>Conductor material</b>	Copper
<b>Cable shielding</b>	U/UTP - unshielded/unshielded twisted pairs
<b>Cable type</b>	U/UTP

## Extended Specifications

<b>AWG wire size</b>	24
<b>Transmission speed</b>	10Gbps
<b>Frequency (Mhz)</b>	500
<b>Cable structure</b>	4 x 2 AWG 24/7 Twisted pair
<b>Locking type</b>	Snagless
<b>NVP value</b>	76%

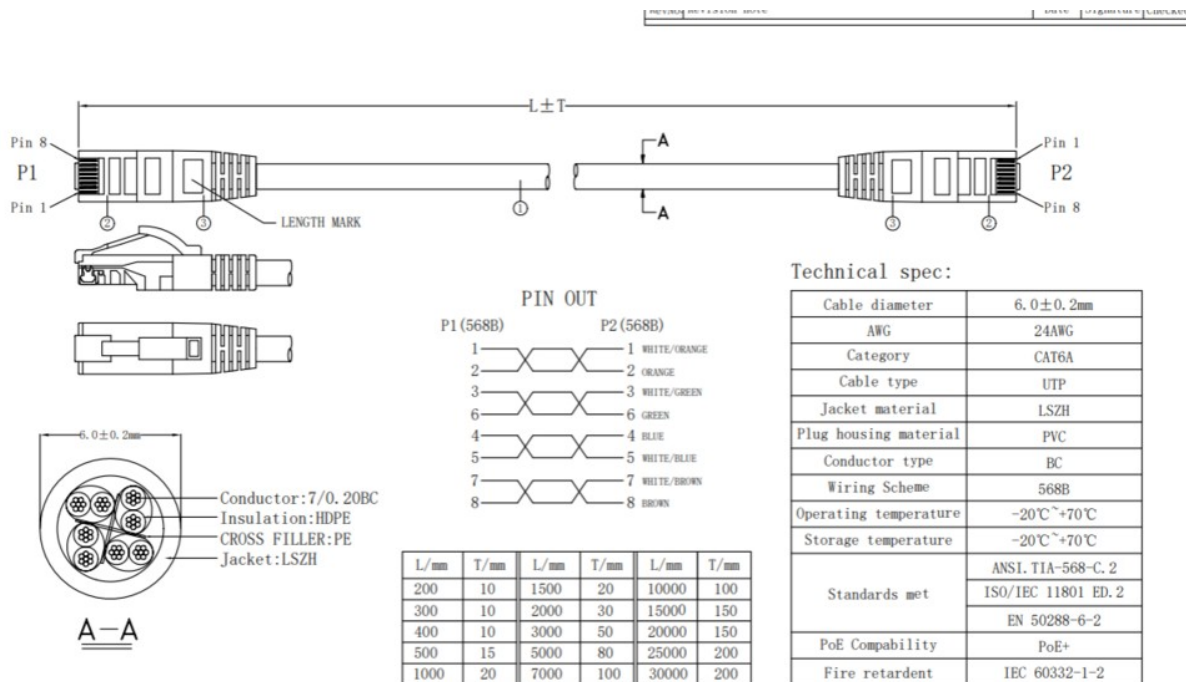


<b>Jacket material</b>	LSZH
<b>Anti-kink sleeve</b>	Moulded PVC
<b>Pin Assignment</b>	568B-568B
<b>Halogenfree</b>	✓
<b>Connector contact plating</b>	50µin gullbelagt


## Single packaging

<b>Unit</b>	PCE
<b>Height (cm)</b>	12
<b>Width (cm)</b>	12
<b>Length(cm)</b>	3

## Dimensional Sketches



- NOTES:**
- 100% Conduction, Short Circuit And Misalignment Test
  - RoHS & REACH Compliant
  - Printing: CAT6A UTP LSZH 24AWG × 4P PATCH VERIFIED TO ANSI. TIA-568-C. 2 & ISO/IEC 11801 ED. 2 & EN 50288-6-2 & IEC 60332-1-2

NO.	MATERIAL	DESCRIPTION	QTY.	UNIT	Ltemref	Quantity	Title/Name, designation, material, dimension etc	Article NO./Reference							
①	MOLDED	PVC		G	Designed by	FLY	HELEN	Approved by - date	2025. 05. 06	File name	UTP CAT6A 24AWG BC LSZH JACKET	Date	2025. 05. 06	Scale	FREE
②	CONNECTOR	RJ45 8P8C, Pin Gold-Plated 50u"	2	PCS	ANGLE:										
③	CABLE	UTP CAT6A 24#(7/0.20BC)+CROSS FILLER LSZH/JACKET, OD: 6.0 ± 0.2MM	L	MM											
NO.	MATERIAL	DESCRIPTION	QTY.	UNIT											

