

Network Cable Copper

LinkIT Patch U/UTP Cat6a Grey 50m
AWG 24/7 | LSZH

Product number: UTP CAT6A-50

Product Description

Cat.6a cables are used for all installations where one needs robust infrastructure that can handle high loads and is designed for the future. Complies with Cat.6a, manages 10Gbps speed and 500MHz bandwidth. Suitable for use in data center. PoE and PoE + are supported for cable bundles up to 100 cables, PoE ++ Type3 and 4 are supported for cable bundles up to 72 cables.

Main Specifications

Brand	LinkIT
Color	Grey
Length (m)	50
Category	Cat.6a
Connector type 1	RJ-45 male (8P8C)
Connector type 2	RJ-45 male (8P8C)
Conductor material	Copper
Cable shielding	U/UTP - unshielded/unshielded twisted pairs
Cable type	U/UTP

Extended Specifications

AWG wire size	24
Transmission speed	10Gbps
Frequency (Mhz)	500
Cable structure	4 x 2 AWG 24/7 Twisted pair
Locking type	Snagless
NVP value	76%



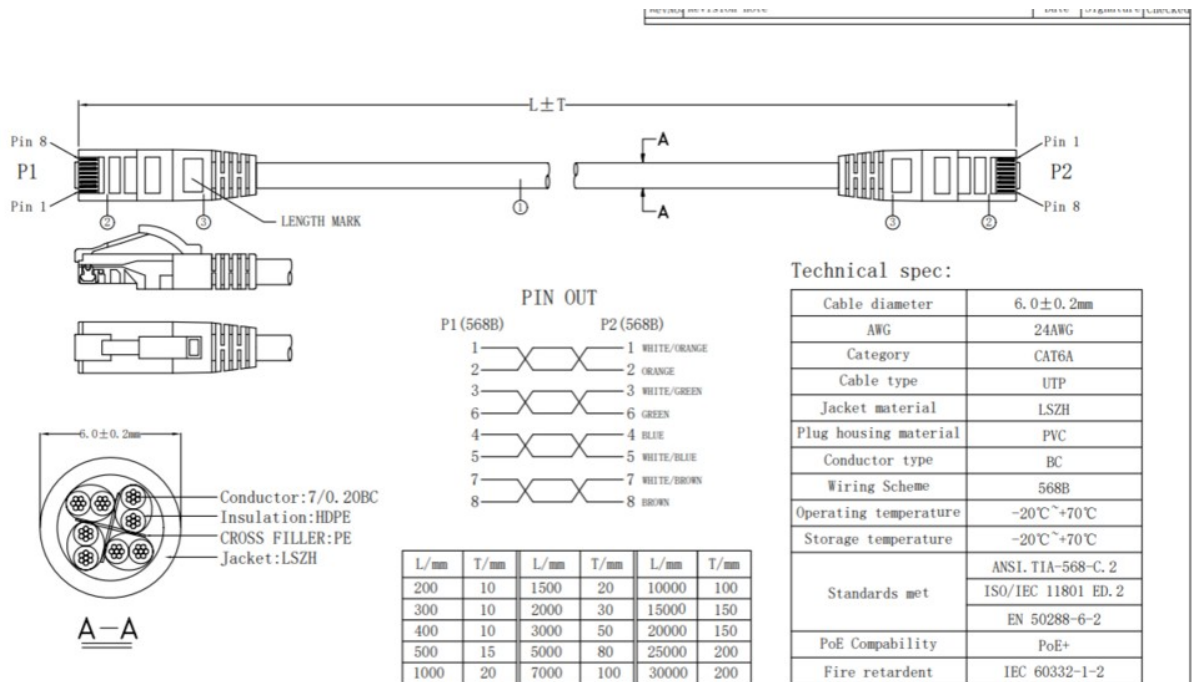
Jacket material	LSZH
Anti-kink sleeve	Moulded
Pin Assignment	568B-568B
Halogenfree	✓
Oil resistant	✗
Fire retardant version	✓
Connector contact plating	Gold plated 50u
Certifications	CE, RoHS, REACH

Single packaging

Unit	PCE
Quantity	1
Height (cm)	25
Width (cm)	25
Length(cm)	5,5
Weight (kg)	1,58
Gross Weight (kg)	1,68



Dimensional Sketches



- NOTES:
 1. 100% Conduction, Short Circuit And Misalignment Test
 2. RoHS & REACH Compliant
 3. Printing: CAT6A UTP LSZH 24AWG × 4P PATCH VERIFIED TO ANSI.TIA-568-C.2 & ISO/IEC 11801 ED.2 & EN 50288-6-2 & IEC 60332-1-2

NO.	MATERIAL	DESCRIPTION	QTY.	UNIT
①	MOLDED	PVC		G
②	CONNECTOR	RJ45 8P8C, Pin Gold-Plated 50u"	2	PCS
③	CABLE	UTP CAT6A 24#(7/0.20BC)+CROSS FILLER LSZH/JACKET, OD:6.0±0.2MM	1	MM

Itemref	Quantity	Title/Name, designation, material, dimension etc	Article NO./Reference
FLY	1	UTP CAT6A 24AWG BC LSZH JACKET	

Designed by: HELEN | Checkde by: HELEN | Approved by - date: 2025.05.06 | File name: | Date: 2025.05.06 | Scale: FREE

ANGLE: UNIT: MM

LinkIT

Edition: 1 | Sheet: 1/1

