

### Product information:

---

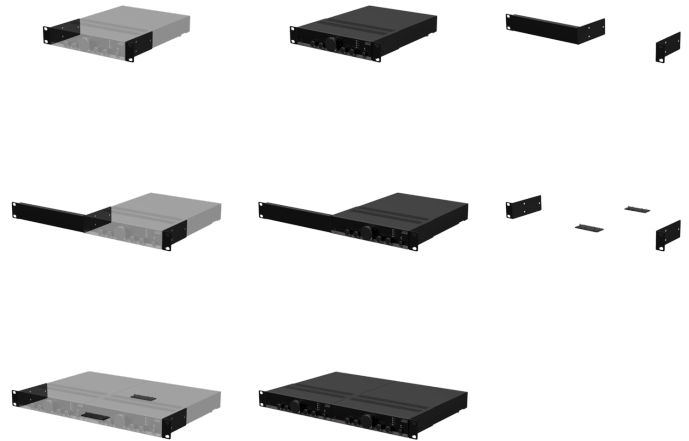
The MBS310 rack mounting set is designed to safely and effectively mount half rackspace devices into 19" or 10.5" racks. The following configurations are possible with this set:

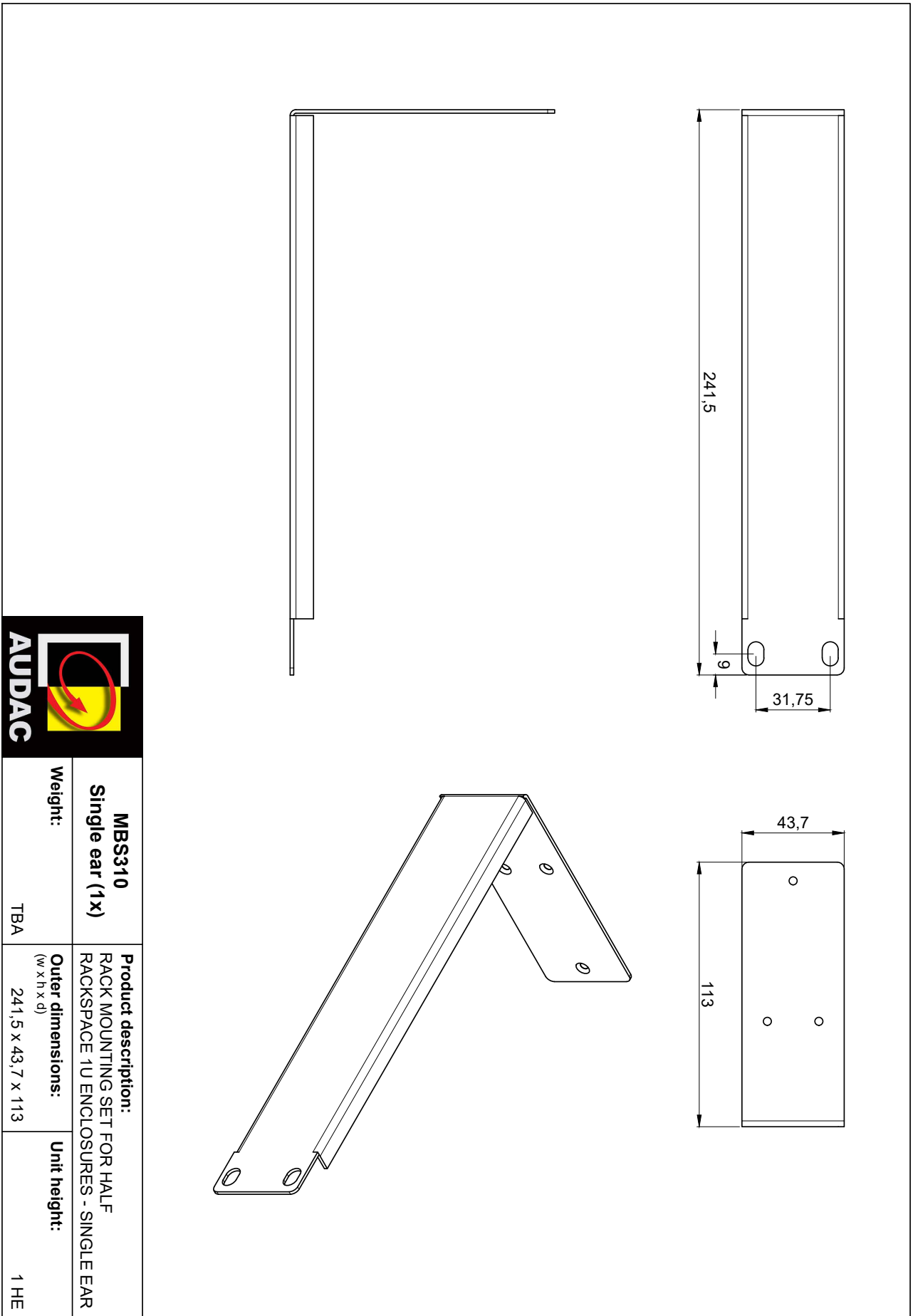
- One half rackspace device in to a 19" rack (1 HE)
- Two half rackspace devices in to a 19" rack (1 HE)
- One half rackspace device in to a 10.5" rack (1 HE)



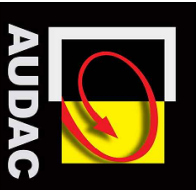
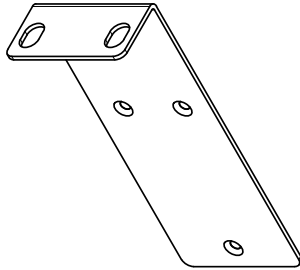
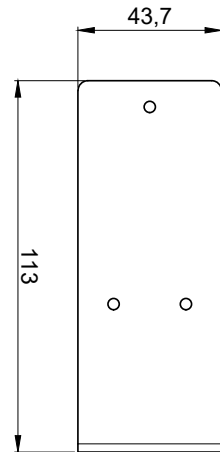
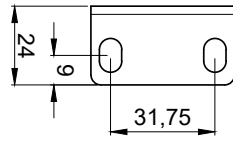
The set contains:

- 1 x single mounting ear
- 2 x double mounting ears
- 2 x couplers
- 8 x screws M4 x 6mm

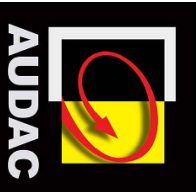
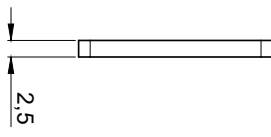
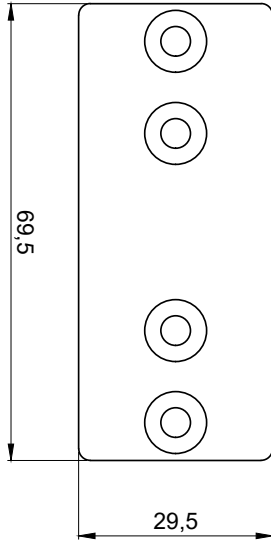




<b>MBS310</b> <b>Single ear (1x)</b>	<b>Product description:</b> RACK MOUNTING SET FOR HALF RACKSPACE 1U ENCLOSURES - SINGLE EAR	<b>Unit height:</b> 1 HE
<b>Weight:</b> TBA	<b>Outer dimensions:</b> (w x h x d) 241,5 x 43,7 x 113	



<b>MBS310</b>	<b>Product description:</b> RACK MOUNTING SET FOR HALF RACKSPACE 1U ENCLOSURES - DOUBLE EAR	<b>Unit height:</b> 1 HE
<b>Double ear (2x)</b>		
<b>Weight:</b>	<b>Outer dimensions:</b> (w x h x d)	
TBA	24 x 43,7 x 113	



<b>MBS310 Coupler (2x)</b>	<b>Product description:</b> RACK MOUNTING SET FOR HALF RACKSPACE 1U ENCLOSURES - COUPLER	
<b>Weight:</b> TBA	<b>Outer dimensions:</b> <small>(w x h x d)</small> 69,5 x 29,5 x 2,5	<b>Unit height:</b> N/A